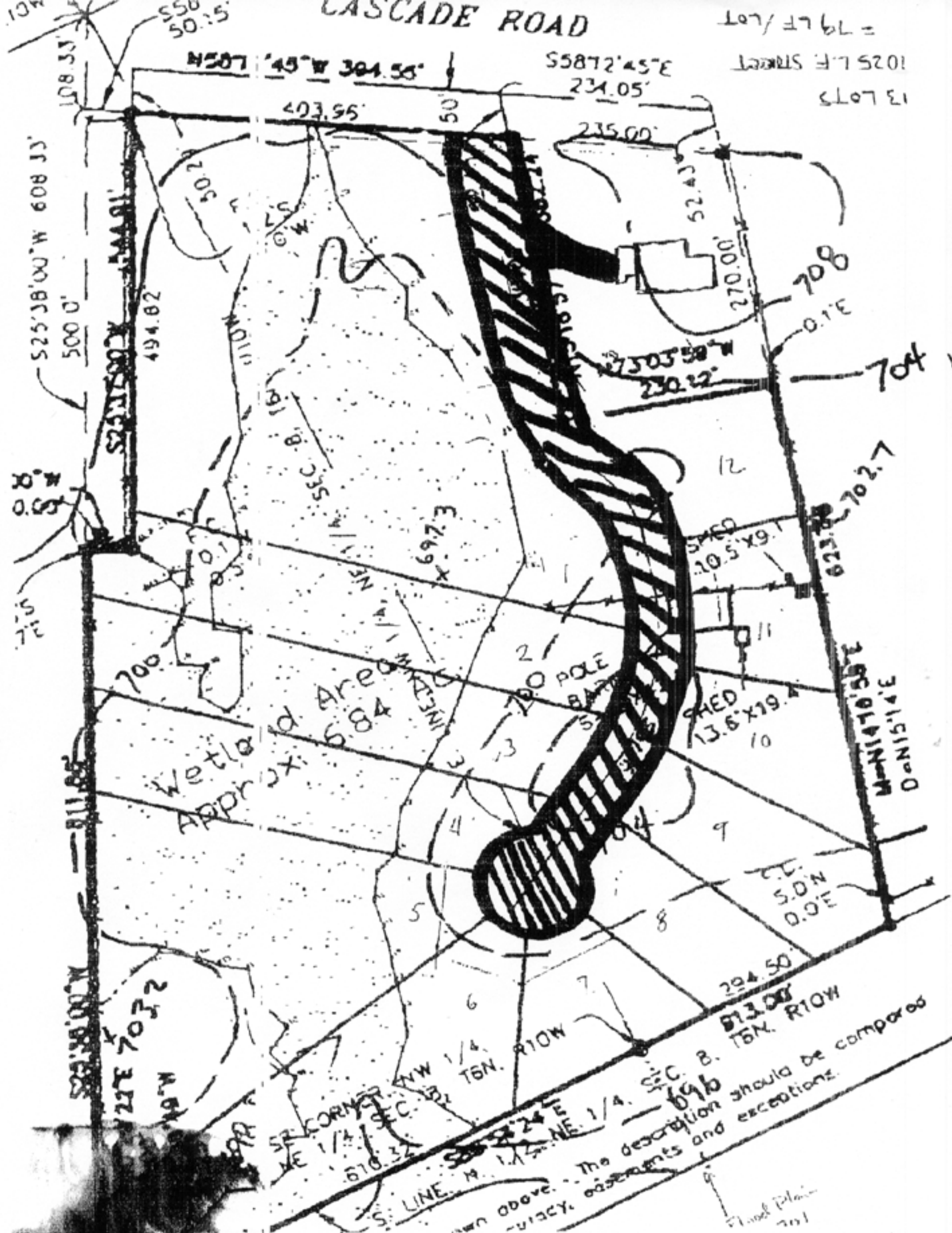


CASCADE ROAD

13 LOTS
1025 L.F. STREET
= 79 LF/LOT



N58°45'W 304.55'

S58°12'45"E 357.21855'

S25°38'00"W 608.33'

S25°38'00"W 500.00'

494.82

302

403.55'

50'

55872'45"E 231.05'

235.00'

52.43'

270.00'

708

0.1'E

704

S75°03'58"W 230.12'

S25°38'00"W 500.00'

700

Wetland Area

604

697.3

100 POLE BARN

10.5' X 9.1'

13.6' X 19.4'

702.7

623.8

M-N 14°10'56"E
D-N 15°14'E

S. 1/4
S. 0'N
0.0'E

204.50'

613.00'

T6N. R10W

SR CORNER NW 1/4, SEC. 8, T6N. R10W

610.32'

S. LINE N. 1/4, SEC. 8, T6N. R10W

S55°24'E 613.00'

696

The description should be compared with the original plat and survey. omissions and exceptions.

Plat Plate 201